

---

## Village of Marshall Annex

---

### Community Profile

The Village of Marshall is located in the northeast quadrant of the County, north of the Village of Deerfield, east of the Town of Sun Prairie, and south of the Town of York. Land use is dominated by agriculture and woodlands, and dispersed mobile homes, one, two and multi-family homes. According to the United States Census Bureau, the Village of Marshall has a total area of 1.78 square miles, 1.7 square miles of it is land and 0.08 square miles is water. The total area is 4.4% water.

As of the 2010 Census, there are 3,862 people, 1,437 households, and 1,040 families residing in the Village of Marshall. The population density is 1,844.7 per square mile. There are 1500 housing units at an average density of 716.5 per square mile. The municipality population distributed by the Wisconsin Department of Administration indicates that the 2015 population for Village of Marshall was 3,864 people. Table 1 shows the population profile by age for the Village of Marshall according to the 2010 Census.

**Table 1 Population Profile of Village of Marshall**

Category	Number	Percent
Total population	3,862	100.0
Under 5 years	330	8.5
5 to 9 years	294	7.6
10 to 14 years	323	8.4
15 to 19 years	281	7.3
20 to 24 years	179	4.6
25 to 29 years	253	6.6
30 to 34 years	301	7.8
35 to 39 years	285	7.4
40 to 44 years	303	7.8
45 to 49 years	292	7.6
50 to 54 years	256	6.6
55 to 59 years	198	5.1
60 to 64 years	166	4.3
65 to 69 years	137	3.5
70 to 74 years	97	2.5
75 to 79 years	69	1.8
80 to 84 years	50	1.3
85 years and over	48	1.2

Data Source: 2010 U.S. Census

---

American Community Survey estimates for 2014 indicate that the median income for a household in the Village of Marshall is \$53,667 and the median income for a family is \$67,985. The per capita income for the Village of Marshall is \$22,277. 90.7% of the population has at least a high school degree, while 17.1% of the population holds at least a bachelor's level degree.

## **Hazard Identification and Risk Assessment**

The first step in a hazard analysis is to identify which hazards the community is vulnerable to. Table 2 outlines the hazard identification for the Village of Marshall based on the Data Collection Guide. The Data Collection Guide listed all of the hazards that could impact anywhere in Dane County. The purpose of this worksheet was to identify and rank the hazards and vulnerabilities specific to the jurisdiction. The Village of Marshall's planning team members were asked to complete the matrix by ranking each category on a scale of 0 to 5 based on the experience and perspective of each planning team member. A ranking of 0 indicated "no concern" while a ranking of 5 indicated "highest concern." This matrix appears as Table 2. This matrix reflects the significance of the hazards relative to one another.

This matrix reflects that the Village of Marshall is most vulnerable to tornadoes and wind storms. The vulnerability established here is a qualitative assumption based on the impacts, geographic extent, probability of future occurrence, and magnitude/severity. On the county level, these vulnerabilities were calculated with quantitative data as well.

**Table 2 Vulnerability Assessment Matrix for the Village of Marshall**

Hazard	Hazard Attributes (1-5)			Impact Attributes (0-5)						Total
				Primary Impact (Short Term – Life and Property)			Secondary Impact (Long Term- Community Impacts)			
	Area of Impact	Past History, Probability of Future Occurrence	Short Term Time Factors	Impact on General Structures	Impact on Critical Facilities	Impact on At-Risk Populations	Social Impact	Economic Impact	Severity of other associated secondary hazards	
Dam Failure	3	1	3	2	2	2	3	2	3	<b>21</b>
Extreme Cold	2	3	1	1	1	2	2	2	1	<b>15</b>
Extreme Heat	2	3	1	1	1	2	2	2	1	<b>15</b>
Drought	1	3	1	1	1	1	1	1	1	<b>11</b>
Flood	2	2	3	2	3	2	2	2	3	<b>21</b>
Fog	1	3	2	2	2	1	2	2	1	<b>16</b>
Hail Storm	2	3	2	2	2	2	2	2	3	<b>20</b>
Landslide	0	0	0	0	0	0	0	0	0	<b>0</b>
Lightning	1	3	2	2	3	2	2	2	3	<b>20</b>
Tornado	3	1	3	3	3	3	3	3	3	<b>25</b>
Wildfire	0	0	0	0	0	0	0	0	0	<b>0</b>
Windstorm	2	3	3	3	3	3	3	3	3	<b>26</b>
<i>Winter Storm</i>	2	3	1	2	2	2	2	2	2	<b>18</b>

Data Source: Village of Marshall Data Collection Guide

---

## Previous Hazard Events

Through the Data Collection Guide, the Village of Marshall noted specific historic hazard events to include in the community profile. These events have been incorporated into the appropriate hazard chapters in the base plan. These events had a particular impact on the community beyond the impacts and events recorded in the Dane County Hazard Mitigation Plan. This is not a comprehensive summary of past incidents, as the hazard profiles collected in the main Mitigation Plan include other events that may have historically impacted the jurisdiction. The events noted by this jurisdiction in the Data Collection Guide include:

### ***Flood: June 2008***

Extensive flood waters in the Village of Marshall were reported. The event occurred throughout the village. There were no deaths or injuries reported, but there was reported damage to personal property, infrastructure, crop damage and had business/economic impacts. Exact numbers were not available. The Village of Marshall did receive FEMA funds to help recover from the hazard in an uncertain amount. It is uncertain if The Village of Marshall planning members felt such an event had a rare potential to occur again.

## Asset Inventory

Assets include the people, property, and critical facilities within the Village of Marshall that are exposed to hazards in general. Inventories of property, essential infrastructure, and natural, cultural or historic resources help provide a comprehensive picture of the community and provide a method of assessing exposure to hazards by establishing the improved and total values, capacities and populations for these assets. It also forms the basis for estimating potential losses, where possible.

## Population

**Table 3 Vulnerable Population Summary**

<b>Disability Status from the 2014 American Community Survey</b>	<b>Number</b>	<b>Percent of Group with Disability</b>
Population Under 5 years old with a Disability	0	0%
Population 5-17 years old with a Disability	46	4.9
Population 18-64 with a Disability	483	21.2
Population Over 65 years old with a Disability	186	49.6
Total Population with Disability	715	18.3

<b>Other Vulnerable Populations</b>	Estimate	Percentage
Families Below Poverty Level	161	16.9
Individuals Below Poverty Level	879	22.8
Of those poverty: Individuals Under 18	452	37.7
Of those poverty: Individuals Over 65	61	16.3
Total Population Over 5 who Speak English less than “very well”	124	3.4
2014 ACS Total Population Estimate	3,912	100%

Data Source: 2014 American Community Survey

## **General Property**

**Table 4 Property Exposure Summary**

<b>Property Type</b>	<b>Total Parcel Count</b>	<b>Improved Parcel Count</b>	<b>Improved Values (\$)</b>	<b>Content (\$)</b>	<b>Total Value (\$)</b>
<b>Totals</b>	<b>1,182</b>	<b>954</b>	<b>122,568,600</b>	<b>61,284,300</b>	<b>183,852,900</b>
Agriculture	17	3	168,400	84,200	252,600
Commercial	33	25	5,896,800	2,948,400	8,845,200
Utilities	9	0	0	0	0
Industrial	13	10	1,370,500	685,250	2,055,750
Institutional/ Governmental	23	5	692,700	346,350	1,039,050
Other	149	9	1,384,400	692,200	2,076,600
Residential	938	902	113,055,800	56,527,900	169,583,700

Data Source: Dane County Land Information Office

## **Critical Facilities**

The Village of Marshall has identified the following critical facilities important to protect from disaster impacts. These are collected in Table 4. Table 4 is based on GIS data inventories from Dane County during the 2010 Natural Hazard Mitigation Plan. No additional information was provided in the Data Collection Handbook for the Village so it is assumed that these critical facility listings remain accurate.

**Table 5 Critical Facility Summary/Essential Infrastructure**

<b>Facility</b>	<b>Type*</b>	<b>No. of Facilities</b>	<b>Replacement Value (\$)</b>
EMS Station	EI	1	\$0
Fire Station	EI	1	\$0

Facility	Type*	No. of Facilities	Replacement Value (\$)
Municipal Hall	EI	2	\$0
Police	EI	1	\$0
Wastewater Treatment	EI	1	\$200,000,000
Water Utility	EI	1	\$0
Well	EI	4	\$1,600,000
Extremely Hazardous Substances	HM	1	\$95,600
Hazardous Chemicals	HM	1	\$0
Child Care	VF	5	\$631,600
Community Based Residential	VF	2	\$1,275,500
Historic Site	VF	1	\$0
Manufactured Home	VF	296	\$0
Public School	VF	4	\$0
Subsidized Housing	VF	1	\$104,300
<b>TOTAL</b>		<b>322</b>	<b>\$203,707,000</b>

Data Source: Dane County GIS, \*EI: Essential Infrastructure; VF: Vulnerable Facilities; HM: Hazardous Materials Facilities;

## Vulnerability to Specific Hazards

This section details vulnerability to specific hazards, where quantifiable, and where it differs from that of the overall County. The previous inventory tables quantify what is exposed to the various hazards within the Village of Marshall. Table 6 cross-references the hazards with the various tables where exposure or vulnerability specifics are found. The intent of Table 6 is to quantify, where possible, future impacts of each hazard on the jurisdiction. In many cases it is difficult to estimate potential losses, so the overall exposure of populations, structures, and critical facilities is referenced.

**Table 6 Hazard Vulnerability Specifics**

Hazard	Populations	Structures	Critical Facilities	Future Damage Potential
<b>Dam Failure</b>	None	Minimal	Minimal	Specifics unknown; See hazard profile in County Plan
<b>Drought</b>	Minimal	None	Minimal	Specifics unknown; See hazard profile in County Plan
<b>Flooding</b>	See section below	See section below	See section below	See section below

<b>Hazard</b>	<b>Populations</b>	<b>Structures</b>	<b>Critical Facilities</b>	<b>Future Damage Potential</b>
<b>Fog</b>	Minimal	None	None	Specifics unknown; See hazard profile in County Plan
<b>Hailstorm</b>	Minimal	See Property Exposure table 3	See Critical Facility Inventory Table(s)	Specifics unknown; See hazard profile in County Plan
<b>Landslide/ Sinkholes/ Erosion</b>	Minimal	Minimal	Minimal	Specifics unknown; See hazard profile in County Plan
<b>Lightning</b>	See Table 2 Population	See Table 3 Property Exposure	See Critical Facility Inventory Table(s)	Specifics unknown; See hazard profile in County Plan
<b>Severe Cold</b>	See Table 2 Population	See Table 3 Property Exposure	See Critical Facility Inventory Table(s)	Specifics unknown; See hazard profile in County Plan
<b>Severe Heat</b>	See Table 2 Population	None	Minimal	Specifics unknown; See hazard profile in County Plan
<b>Severe Winter Storm</b>	See Table 2 Population	See Table 3 Property Exposure	See Critical Facility Inventory Table(s)	Specifics unknown; See hazard profile in County Plan
<b>Tornado</b>	See Table 2 Population	See section below	See Critical Facility Inventory Table(s)	See section below
<b>Wildfire</b>	Minimal	Minimal	Minimal	Specifics unknown; See hazard profile in County Plan
<b>Windstorm</b>	See Table 2 Population	See Table 3 Property Exposure	See Critical Facility Inventory Table(s)	Specifics unknown; See hazard profile in County Plan

## ***Flood***

### **Structures and Properties in the Floodplain**

Refer to the flood profile in the mitigation plan for a description of the methodology used to identify potentially flood-prone properties. Figure 1 shows mapped floodplains, future growth areas, and critical or vulnerable facilities. Tables 7 and 8 outline the primary structures and properties with primary structures on them within the Village of Marshall. Potential number of individuals at risk figures are based on primary residential structures and the average household size within Dane County.

**Table 7 Primary Structures in the Floodplain**

Total Floodway Structures	Floodway Residential Structures	Total Structures in 100 year Floodplain	Residential Structures in 100 year Floodplain	Potential Number of Individuals at Risk in 100 year Flood	Total Structures in 500 year Floodplain	Residential Structures in 500 year Floodplain	Potential Number of Individuals at Risk in 500 year Flood
1	0	1	0	0	4	1	2.33

Source: Analysis based on Dane County Land Information Office Data

**Table 8 Properties with Primary Structures in the Floodplain**

Total Floodway Properties	Floodway Improved Values	Floodway Residential Properties	Total Properties in 100 year Floodplain	Total Improved Value of Properties in 100 year Floodplain	Residential Properties in 100 year Floodplain	Total Properties in 500 year Floodplain	Total Improved Value of Properties in 500 year Floodplain	Residential Properties in 500 year Floodplain
1	\$8,100	0	1	\$8,100	0	4	\$143,500	1

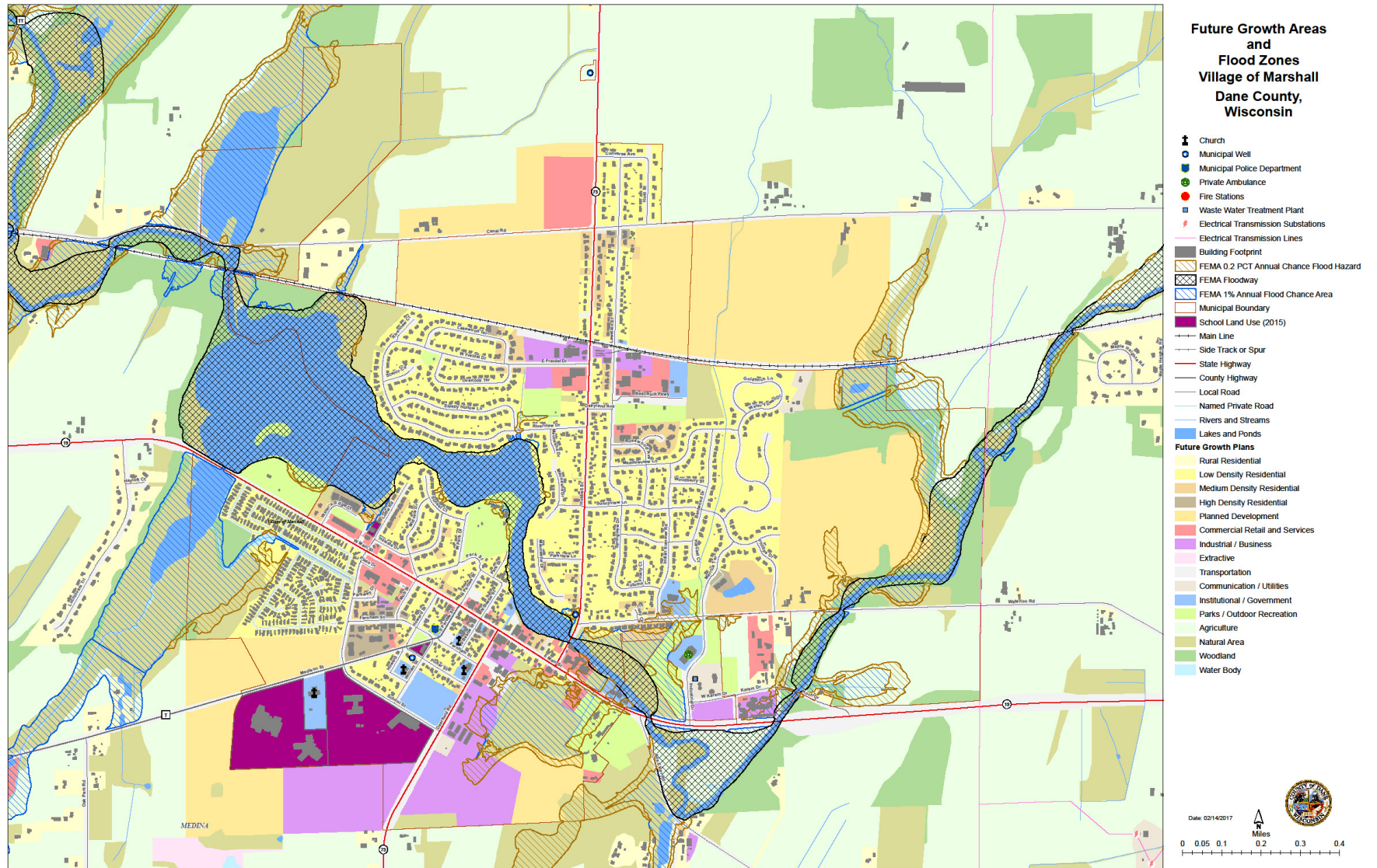
Source: Analysis based on Dane County Land Information Office Data

**Repetitive Loss Properties and Flood Insurance Policies**

There are no repetitive loss properties within the Village of Marshall. According to FEMA Policy and Claim Statistics for Flood Insurance, the community has 3 flood insurance policies, with a total coverage amount of \$1,050,000. There have been 2 claims and \$15,572 in losses paid in flood insurance claims since 1978.



Figure 1 Flood Hazards and Future Land Use Map



## Tornado

While it is difficult to estimate specific losses to a tornado due to the random nature of the event, a methodology was developed that was applied to each jurisdiction during the 2015 update. The table below estimates the percent area of the jurisdiction that could be impacted based on the average sized tornado (F2) in Dane County. High value exposure is based on 100% loss, medium 50% loss, and low is 25% loss to the property potentially impacted. The loss ratio, which is the ratio of the damaged building value to total exposed building value, is a measure of the impact to the jurisdiction as a whole. Communities with loss ratios 10% or more may have difficulty recovering from a disaster. Refer to the tornado hazard profile in the main mitigation plan for more details on this methodology.

**Table 9 Tornado Loss Estimate**

% Area of Impact	Improved Parcel Count	Affected Structure Estimate	Total Exposed Value	Estimated Loss \$ - High Damage Range	Estimated Loss \$ - Moderate Damage Range	Estimated Loss \$ - Low Damage Range	Loss Ratio for Moderate Damage Range
36.83%	1,353	498	\$2,257,730,400	\$831,419,710	\$415,709,855.06	\$207,854,927.53	18.4%

Data Source: Analysis Based on Dane County Land Information Office's data

## Growth and Development Trends

Planned land use is shown in Figure 1, in relation to the flood hazard. Table 10 illustrates how the Village of Marshall has grown in terms of population and number of housing units between 2010 and 2014-15. Housing data is to 2014 due to data availability. Table 11, drawn from the Demographics Services Center at the Wisconsin Department of Administration, shows population projections through 2035.

**Table 10 Village of Marshall Change in Population and Housing Units, 2010-2014/15**

2010 Population	2015 Population	Percent Change (%) 2010-2015	2010 # of Housing Units	2014 # of Housing Units	Percent Change (%) 2010-2014
3862	3864	0.05%	1,500	1,468	-2.1%

**Table 11 Village of Marshall Population Projections, 2015-2035**

Population Change	5 year Growth %	2015	2020	2025	2030	2035
Increase by same percentage each year	0.01%	3,864	3,866	3,868	3,870	3,872

Data Source: Wisconsin Dept. of Administration and Dane County

## Problems or Additional Vulnerability issues

- 300 Unit Mobile Home Park
- 2 24-Unit Apartment Buildings
- 14 4 or 8-Unit Apartment Buildings
- All of these are in a centralized location

- Proposed development areas are further from the Maunsha River that runs through our community. Though a larger number of our residents that suffered from the flooding were not along the waterway, new developments would not be in the boundaries of the waterway.

## **Capability Assessment**

Capabilities are the programs and policies currently in use to reduce hazard impacts or that could be used to implement hazard mitigation activities. This capabilities assessment summarizes regulatory mitigation capabilities, administrative and technical mitigation capabilities, and fiscal mitigation capabilities for the Village of Marshall.

### **Mitigation Capabilities Summary**

Table 12 lists planning and land management tools typically used by local jurisdictions to implement hazard mitigation activities, or by themselves contribute to reducing hazard losses. The table also indicates which of these tools are currently utilized in the Village of Marshall

**Table 12 Village of Marshall Regulatory Mitigation Capabilities**

<b>Regulatory Tool (ordinances, codes, plans)</b>	<b>Yes/No</b>	<b>Comments</b>
General or Comprehensive plan	Yes	
Zoning ordinance	Yes	www.marshall-wi.com or email
Subdivision ordinance	Yes	www.marshall-wi.com or email
Growth management ordinance	No	
Floodplain ordinance	Yes	www.marshall-wi.com or email
Other special purpose ordinance (stormwater, steep slope, wildfire)	Yes	www.marshall-wi.com or email
Building code	Yes	www.marshall-wi.com or email
Fire department ISO rating	Yes	
Erosion or sediment control program	Yes	www.marshall-wi.com or email
Stormwater management program	Yes	www.marshall-wi.com or email
Site plan review requirements	Yes	www.marshall-wi.com or email
Capital improvements plan	No	
Economic development plan	No	
Local emergency operations plan	Yes	
Other special plans	Yes	Downtown Improvement Plan, Bike Plan
Flood insurance study or other engineering study for streams	Yes	CD

Regulatory Tool (ordinances, codes, plans)	Yes/No	Comments
Elevation certificates (for floodplain development)	Yes	CD

Data Source: Village of Marshall Data Collection Guide

Table 13 identifies the personnel responsible for mitigation and loss prevention activities as well as related data and systems in the Village of Marshall.

**Table 13 Responsible Personnel and Departments for the Village of Marshall**

Personnel Resources	Yes/No	Department/Position	Comments
Planner/engineer with knowledge of land development/land management practices	Yes	Town & Country Engineering	Contract Service
Engineer/professional trained in construction practices related to buildings and/or infrastructure	No		
Planner/engineer/scientist with an understanding of natural hazards	No		
Personnel skilled in GIS	No	Town & Country Engineering and Dane County	
Full-time Building Official	No	Independent Inspection	Part-time Service
Floodplain Manager	No		
Emergency Manager	Yes	Police Chief Village Administrator	
Grant Writer	Yes	Police Chief Village Administrator	
Other Personnel	Yes	Police Department Office Manager Deanna Chadwick	
GIS Data Resources – (land use, building footprints, etc.)	No	Dane County	
Warning systems/services (Reverse 9-11, cable override, outdoor warning signals)	Yes	Dane County 911 Center	

Data Source: Village of Marshall Data Collection Guide

Table 14 identifies financial tools or resources that the Village of Marshall could potentially use to help fund mitigation activities.

**Table 14 Financial Resources for the Village of Marshall**

Financial Resources	Accessible/Eligible to Use (Yes/No)
Community Development Block Grants	Yes

<b>Financial Resources</b>	<b>Accessible/Eligible to Use (Yes/No)</b>
Capital improvements project funding	Yes
Authority to levy taxes for specific purposes	Yes
Fees for water, sewer, gas, or electric services	Yes
Impact fees for new development	Yes/Access
Incur debt through general obligation bonds	No
Incur debt through special tax bonds	No
Incur debt through private activities	No

Data Source: **Village of Marshall** Data Collection Guide

### **Additional Capabilities**

- The Village of Marshall has promoted safe and responsible water use through public forums for years during school open house, Fire Safety Week, EMS Appreciation Week.
- Police Department promotes household preparedness for all natural disasters.

### ***National Flood Insurance Program Participation***

The Village of Marshall has participated in the NFIP since 1980. Details are provided in Table 15.

**Table 15 NFIP Program for the Village of Marshall**

<b>Floodplain Ordinance</b>	<b>Comments</b>	<b>Dane County FIRM Panels</b>	<b>NFIP Participation</b>	<b>Init FHBM Identified</b>	<b>Init FIRM Identified</b>	<b>Curr Eff Map Date</b>	<b>Reg-Emer Date</b>
Yes		315, 320, 325	Yes	12/17/1973	12/16/1980	9/17/2014	12/16/1980

Source: FEMA National Flood Insurance Program Community Status Book.

### **Public Involvement Activities**

The Village of Marshall community participated in the County public outreach process. This was a series of public workshops held around the County in which an overview of natural hazard mitigation was given and the County plan was discussed. Residents were then given the opportunity to give their input on mitigation actions that could be taken, and filled out informational surveys that assessed the level of risk the perceived within their own community. More information on these meetings can be found in the County base plan.

### **Mitigation Objectives (Actions)**

**Objective 1:** The Village will encourage The Blaschka Family, Dane County, Wisconsin Emergency Management, Wisconsin DNR to conduct a dam-break analysis as part of the planned safety improvements of the privately-owned Blaschka Dam.

---

Steps:

- 1) Facilitate Meeting with the Blaschka Family and Montgomery & Associates.
- 2) Conduct a Dam Hazard Study.

Lead Implementing Agency: Blaschka Family

Supporting Agencies:

- Dane County Land Conservation
- Dane County Emergency Management
- Dane County Lakes and Watershed Commission
- Town of Medina
- Village of Marshall
- Wisconsin Emergency Management
- Wisconsin Department of Natural Resources
- Wisconsin State Highway Department
- Contractor

Possible Funding and Technical Assistance:

- Blaschka Family
- Wisconsin DNR
- Village of Marshall – currently committed \$2,000 towards step 1 of Study.

Time Line: Begin immediately

Priority: High

Estimated Cost: Unknown

**Objective 2:** Establish cooling and heating centers, and severe weather/tornado shelters as needed that will function during natural hazards and power outages.

Steps:

- Determine the number of people in need of shelter
- Determine location of shelter.
- Inform residents on the intentions of the Village and County.
- Promulgate a RFP for a shelter.
- Construct Shelter.
- Educate residents about the use of the shelter.

Lead Implementing Agency: Village of Marshall

Supporting Agencies:

- 
- Department of Emergency Management
  - Contractor

Possible Funding and Technical Assistance:

- Evergreen Park
- FEMA – Hazard Mitigation Grant Program
- FEMA – Pre-Disaster Mitigation Grant Program

Time Line: begin immediately after plan adoption

Priority: High

Estimated Cost: Unknown

**Objective 3:** Ensure natural hazard warnings by providing at cost, programmable NOAA weather radios.

Steps:

- 1) Assess need for weather radios.
- 2) Purchase radios.
- 3) Inform public of their availability and distribute.
- 4) Periodically assess their usefulness and continue program if needed.

Lead Implementation Agency: Village of Marshall

Supporting Agency: Dane County Emergency Management

Possible Funding and Technical Assistance:

- Staff Time
- FEMA – Hazard Mitigation Grant Program
- FEMA – Pre-Disaster Mitigation Grant Program.

Time Line: Begin immediately, on going if needs require

Priority: Medium

Estimated Costs: Unknown

**Objective 4:** Emergency Response personnel need to be trained and plan for various contingencies and response activities, such as evacuation, traffic control, search and rescue.

Steps:

- 1) Analyze current training

- 
- 2) Determine contingency deficiencies.
  - 3) Allocate Staff resources to the plan.
  - 4) Gather list of volunteers willing to be trained in emergency response.

Lead Implementing Agency: Village of Marshall Police Department

Supporting Agencies:

- Marshall EMS
- Marshall Fire Department
- Marshall Public Works – Street Department
- Marshall Public Works – Utility Department
- Dane County Emergency Management

Possible Funding and Technical Assistance:

- Staff Time
- Local Budget
- FEMA – Pre-Disaster Mitigation Grant Program.

Time Line: Begin Immediately

Priority: Medium

Estimated Cost: Unknown

**Objective 5:** Update and expand Emergency Operation Plan.

Steps:

- 1) Determine plan deficiencies.
- 2) Allocate staff resources to the plan.
- 3) Obtain contracts with local equipment and supply companies.
- 4) Adopt the Plan.

Lead Implementing Agency: Village of Marshall Police Department

Supporting Agencies:

- Marshall EMS
- Marshall Fire Department
- Marshall Public Works – Street Department
- Marshall Public Works – Utility Department
- Dane County Emergency Management

Possible Funding and Technical Assistance:



- 
- Staff Time
  - Local Budget

Time Line: Begin Immediately

Priority: High

Estimated Cost: Unknown

**Objective 6:** Obtain back-up power through the procurement of a generator for the Public Safety Building which houses the EMS and Fire Department to be used during emergencies to ensure full operational capacity of station.

Steps:

- 1) Assess electrical production needs of station that would allow it to maintain its ability to provide full level of services.
- 2) Evaluate various generator sizes, options and available locations
- 3) Acquire and install generator and transfer switch

Lead Agency:

- Marshall EMS
- Marshall Fire Department

Supporting Agencies:

- Village of Marshall
- Town of Medina
- Town of York
- Town of Sun Prairie
- Contractor

Possible Funding and Technical Assistance:

- Marshall EMS Budget
- Marshall Fire Department Budget
- FEMA – Hazard Mitigation Grant Program
- FEMA – Pre-Disaster Mitigation Grant Program

Time Line: Begin Immediately

Priority: Medium

Estimated Cost: Unknown

---

**Objective 7:** Implement a system of tornado sirens that will alert residents to the impending hazards that may cause significant damage to the area.

Steps:

- 1) Map the current locations of the tornado sirens including a plume identifying the areas of the Village that have acceptable levels for a tornado warning.
- 2) Map potential locations for new tornado sirens within the underserved areas to provide alerts that can enable residents to take protective measures for a storm.

Lead Implementing Agency: Village of Marshall

Supporting Agencies: Dane County Emergency Management

Possible Funding and Technical Assistance:

- Staff time
- Dane County Emergency Management
- Village of Marshall

Time Line: Begin Immediately

Priority: Medium

Estimated Costs: Unknown

**Objective 8:** Establish and foster an informal communication system that aims to look after special populations, including the elderly, who are most susceptible to extreme cold and heat events.

Steps:

- 1) Establish a stakeholder group of experts and citizens.
- 2) Determine to whom information will be communicated.
- 3) Develop information in need of communication.
  - a) Educational material.
  - b) List of resources for elderly.
  - c) List of special populations in neighborhood.
  - d) Other
- 4) Develop a method of dispersing information.
- 5) Establish mechanism for on-going communication to citizenry and special populations about program and resources available.

Lead Implementing Agency: Village of Marshall

Supporting Agencies:

- Dane County Human Services

- 
- Dane County Emergency Management

Possible Funding and Technical Assistance:

- Operational Budget.
- FEMA – Hazard Mitigation Grant Program
- FEMA – Pre-Disaster Mitigation Grant Program

Time Line: Begin Immediately

Priority: Medium

Estimated Cost: Unknown

**Objective 9:** Continue to implement sound floodplain management practices through continued compliance with the National Flood Insurance Program, to include floodplain ordinance enforcement and periodic review, promoting the benefits of flood insurance, and continued staff training and development in floodplain management.

Steps:

- 1) Evaluate through the existing staff, County planning staff, and additional DNR staff if necessary, the regulatory deficiencies and enforcement shortcomings in flood-related ordinances and programs (see related County objective).
- 2) Periodically update ordinances as necessary.
- 3) Ensure that stop work orders and other means of compliance are being used as authorized by each ordinance.
- 4) Suggest changes to improve enforcement of and compliance with regulations and programs.
- 5) Encourage floodplain management staff to become Certified Floodplain Managers (CFM) or maintain their CFM status.
- 6) Participate in Flood Insurance Rate Map updates by adopting new maps or amendments to maps.
- 7) Utilize recently completed Digital Flood Insurance Rate maps in conjunction with GIS to improve floodplain management, such as improved risk assessment and tracking of floodplain permits.
- 8) Promote and disperse information on the benefits of flood insurance, with assistance from partners such as the County, WDNR, or ASFPM.
- 9) Evaluate the potential costs and benefits of becoming a participant in the Community Rating System.

Lead Implementing Agency: Local zoning administrator.

Supporting Agencies:

- Dane County Planning and Development
- Lakes and Watershed Commission
- Land Conservation Department
- Association of State Floodplain Managers
- Wisconsin Department of Natural Resources

---

Possible Funding and Technical Assistance:

- Staff Time

Timeline: On going

Priority: High

Estimated Costs: Low; can be accomplished with existing staff and within existing department budget.

**Objective 10:** Support Dane County efforts to mitigate natural hazards at the local level through continued collaboration with County projects in the Town of Sun Prairie area. The Village will continue to lower its vulnerability to natural hazards by distributing County hazard mitigation information and evaluating grant opportunities for potential use on hazard mitigation projects within the Town of Sun Prairie.

Steps:

- 1) Consider Dane County hazard mitigation information and its relevance to Village hazard mitigation efforts and resident safety.
- 2) Take necessary steps to apply for hazard mitigation grant money when available.

Lead Implementing Agency: Village of Marshall

Supporting Agencies: Dane County Emergency Management

Possible Funding and Technical Assistance:

Timeline: Continuous

Priority: Moderate

Estimated Costs: Unknown